

TOTAL

C L O T H I N G

YOUR SCHOOL UNIFORM SUPPLIER



SCHOOLS

EARLY BIRD OFFER

FREE POSTAGE
& PACKING

When you spend
over £50.00

(From 1st until
30th June 2020).



DOWNHAM MARKET
ACADEMY

UNIFORM GUIDE AND PRICE LIST

www.totalclothingshop.co.uk/dma

Like us on
facebook

To stay up to date
with our latest offers.

At the time of producing this leaflet we are still operating under government guidelines during the Covid 19 pandemic. Please check our website:

www.totalclothing.co.uk for the latest information updates.

PLEASE ORDER BY
THURSDAY 13TH AUGUST
To guarantee delivery
before Back to School.

INTRODUCTION

Dear Parents & Carers

Watch this [video](#) for all of the Downham Market Academy uniform requirements and helpful sizing hints.

We have designed this booklet to help you to order your school uniform with ease, whilst understanding the requirements from the school. Given the current Covid-19 situation, we have added some additional information to try and make it as easy as possible.

We understand how difficult it can be when you are buying secondary school uniform for the first time (or even second or third time) as children's sizes can be so different. With this in mind, we have designed this booklet to help you every step of the way.

We start with a [Uniform Measuring Guide](#) to ensure that you measure correctly for each garment. On this page you will see how to measure for each part of the school uniform you will need.

We have also included a [Hints & Tips](#) section on buying your school uniform.

You will also see a [Uniform Policy](#) which tells you how the uniform should be worn and what is not acceptable.

On the pages that follow there is a comprehensive [Uniform Size Guide](#) detailing the garments required for your school uniform. Garments will be marked compulsory and optional so you can see what you need to buy now and what you can maybe purchase later.

We always encourage parents to order as soon as possible to ensure you will have the correct uniform for back to school.

Lastly you will see the link to order your school uniform on-line. This can be done via your school website.

We have a returns policy of 28 days from your purchase to return or exchange of your garments. It would be great if you could send returns as soon as possible to help our stock levels.

We are here to help you get the best fit for school uniform for your child. If you have any questions please call our friendly customer care team on **01733 394758** or via email at customerservices@totalclothing.co.uk who will be happy to advise you.

Kind regards

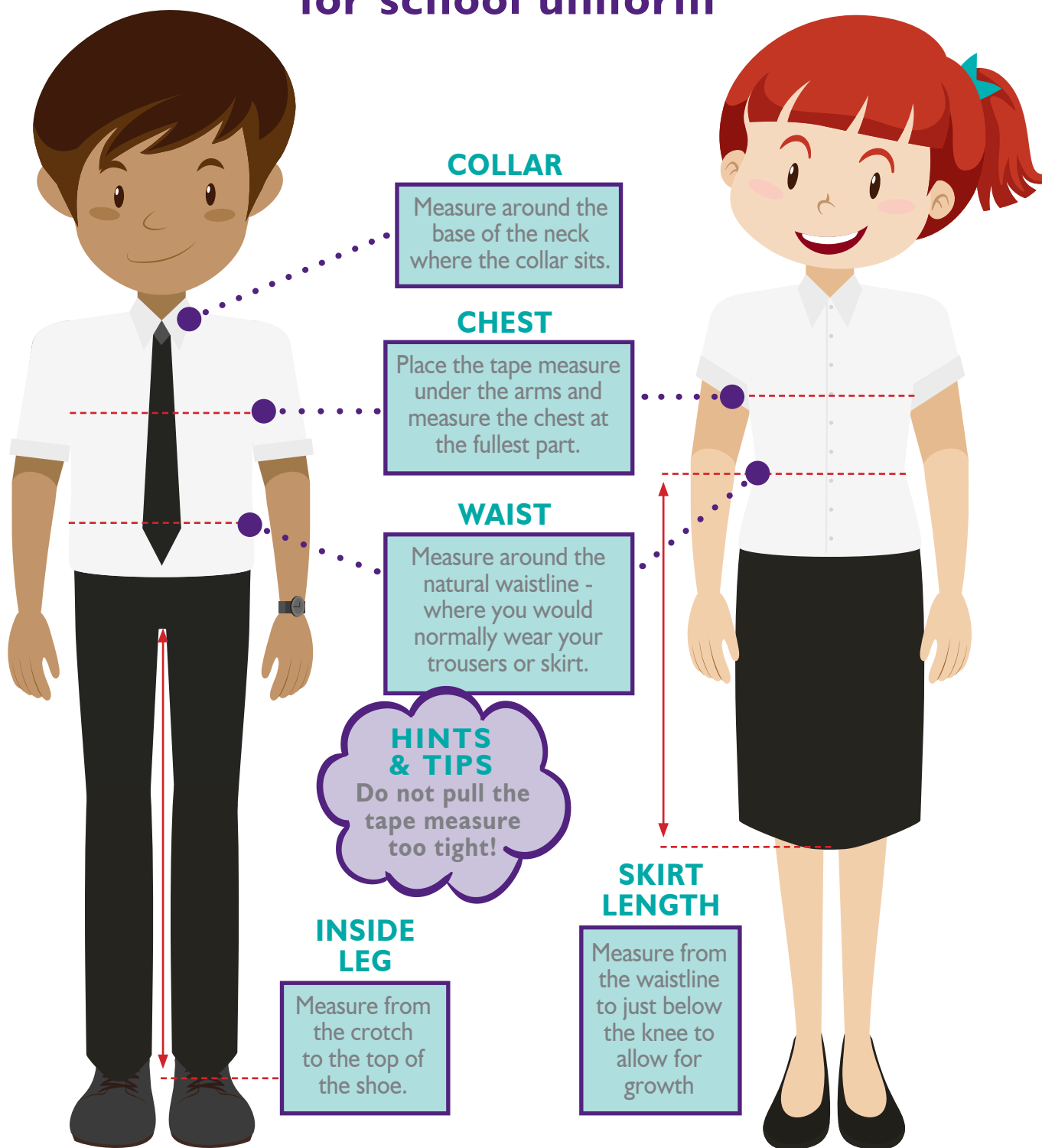
Christine, Laura, James and Ben
The Schools Team, Total Clothing Ltd



SCHOOLS

UNIFORM MEASURING GUIDE

How to measure your child for school uniform



www.totalclothingshop.co.uk/dma

DOWNHAM MARKET ACADEMY | UNIFORM STANDARDS

We believe that a uniform helps to give young people a sense of identity and belonging to the Downham Market Academy community. We like all of our students to look smart every day by following the simple rules outlined in our Uniform Policy, details of which can be found [here](#).

NAVY BLAZER with Academy logo

TIE in House colour

NAVY V-NECK JUMPER with Academy logo

WHITE SHIRT tucked in and top button fastened (short or long sleeved)

GREY TROUSERS (tailored, not tight-fitting, stretchy or denim)

or

GREY SKIRT (straight fit, worn at knee length)

or

GREY SHORTS (smart style, knee length)

PLAIN BLACK SHOES (trainers are acceptable but must not have any visible logos, colours, ticks or stripes)

PE POLO SHIRT

PE RUGBY TOP

or

¼ ZIP TOP with Academy logo and House colour side panels

PLAIN BLACK PE SHORTS and/or **TRACKSUIT BOTTOMS**

PLAIN BLACK RUGBY/FOOTBALL SOCKS

INDOOR TRAINERS or **STUDED BOOTS** depending on sports activity

PLAIN BLACK, FITTED T-SHIRT, LEGGINGS for dance

Protective items such as **GUM SHIELDS** and **SHIN PADS**

SOCKS of any colour and style may be worn, although black, charcoal grey and navy socks are recommended.

THE FOLLOWING ITEMS ARE NOT PERMITTED

MAKEUP is not permitted in Years 7 and 8

Excessive makeup, for example false eyelashes is not permitted for any student

BRIGHTLY COLOURED OR PATTERNED NAIL VARNISH, including false nails and extensions

NO JEWELLERY, other than one small stud in each ear and a watch, is permitted.

Retainer bars are not acceptable for facial piercings

LARGE BELT BUCKLES with brands and/or logos

EXTREME HAIR STYLES and **COLOURS**

PERMANENT AND TEMPORARY TATTOOS SUCH AS HENNA



SCHOOLS

HINTS & TIPS | SPECIFIC TO YOUR SCHOOL

HINTS & TIPS BEFORE YOU START...

...make sure you know the house colour your child belongs to before ordering the ties and PE kit.

HINTS & TIPS JUMPERS

The v-neck knitted jumpers can come up fairly small in size. It would be advisable to order a size larger.

HINTS & TIPS BLAZERS

You may want to go for a slightly bigger blazer size if your child will be wearing a jumper during the winter months. Make sure when you try on your blazer the sleeves come down to the knuckles to allow for growth and across the shoulders there is also room for growth.

HINTS & TIPS STRAIGHT SKIRTS

Fit to waist size as there is no adjustable waist. Fit just below the knee to allow for growth.

HINTS & TIPS PLEATED SKIRTS

This skirt sits just below the waistline. Fit just below the knee to allow for growth.

HINTS & TIPS BOYS TROUSERS

These fit true to size and have an adjustable waist.

HINTS & TIPS PE TOPS

PE Tops should always be bought slightly bigger to allow for growth and ease of taking on and off in a hurry when changing.

HINTS & TIPS PE SHORTS

The PE Shorts have a draw string to pull the waist in tighter.

HINTS & TIPS LEGGINGS

PE leggings come in waist sizes. Use your trouser/skirt measurement as a guide.

HINTS & TIPS DON'T FORGET

Don't forget name labels, water bottles and mouth guards!

www.totalclothingshop.co.uk/dma

DOWNHAM MARKET ACADEMY | UNIFORM



DOWNHAM MARKET ACADEMY BOYS BLAZER

CHEST 28 CHEST 30 CHEST 32 CHEST 34 CHEST 36 CHEST 38 CHEST 40 CHEST 42

Navy with logo on pocket.
With internal zip pockets, Maxtech Plus stain resistant finish and concealed zip.

From £26.00

QUANTITY/SIZE REQUIRED



DOWNHAM MARKET ACADEMY GIRLS BLAZER

CHEST 28 CHEST 30 CHEST 32 CHEST 34 CHEST 36 CHEST 38 CHEST 40 CHEST 42

Navy with logo on pocket.
With internal zip pockets, Maxtech Plus stain resistant finish and concealed zip.

From £26.00

QUANTITY/SIZE REQUIRED



DOWNHAM MARKET ACADEMY TIE

16 inch clip on tie. Machine washable.
In House colours **SKY** / **EMERALD** / **PURPLE** / **SCARLET**

From £5.50

QUANTITY/COLOUR
REQUIRED



DOWNHAM MARKET ACADEMY V NECK JUMPER

CHEST 28 CHEST 30 CHEST 32 CHEST 34 CHEST 36 CHEST 38 CHEST 40 CHEST 42

Navy with logo.
Soft handle but hard wearing. Ribbed cuffs and welt.

From £16.50

QUANTITY/SIZE REQUIRED



SHORT SLEEVE EASYCARE POLYCOTTON BLOUSES - TWIN PACK

CHEST 22 CHEST 24 CHEST 26 CHEST 28 CHEST 30 CHEST 32 CHEST 34 CHEST 36 CHEST 38 CHEST 40 CHEST 42 CHEST 44

Button to neck. Non-iron. Side vents. Short sleeve. Twin pack. Machine washable. Available in chest sizes in inches 22in (56cm) - Age 3/4 yrs, 24in (61cm) - Age 5/6 yrs, 26in (66cm) - Age 7/8 yrs, 28in (71cm) - Age 9/10 yrs, 30in (76cm) - Age 11 yrs, 32in (81cm) - Age 12 yrs, 34in (86cm) - Age 13 yrs, 36in (91cm) - Age 14 yrs, 38in (96cm) - Age 15/16 yrs, 40in (102cm), 42in (107cm) & 44in (112cm).

From £12.50

QUANTITY/SIZE REQUIRED



LONG SLEEVE BLOUSE - TWIN PACK

CHEST 22 CHEST 24 CHEST 26 CHEST 28 CHEST 30 CHEST 32 CHEST 34 CHEST 36 CHEST 38 CHEST 40 CHEST 42 CHEST 44

Button to neck. Non-iron. Side vents. Long sleeve. Twin pack. Machine washable. Available in chest sizes in inches 22in (56cm) - Age 3/4 yrs, 24in (61cm) - Age 5/6 yrs, 26in (66cm) - Age 7/8 yrs, 28in (71cm) - Age 9/10 yrs, 30in (76cm) - Age 11 yrs, 32in (81cm) - Age 12 yrs, 34in (86cm) - Age 13 yrs, 36in (91cm) - Age 14 yrs, 38in (96cm) - Age 15/16 yrs, 40in (102cm), 42in (107cm) & 44in (112cm).

From £12.50

QUANTITY/SIZE REQUIRED



SHORT SLEEVE EASYCARE POLYCOTTON SHIRTS - TWIN PACK

NECK 11 NECK 11.5 NECK 12 NECK 12.5 NECK 13 NECK 13.5 NECK 14
NECK 14.5 NECK 15 NECK 15.5 NECK 16 NECK 16.5 NECK 17

Chest pocket and short sleeves. Easy care and machine washable. Available in collar sizes in inches 11in (28cm) - Age 3/4 yrs, 11.5in (29cm) - Age 5/6 yrs, 12in (30cm) - Age 7/8 yrs, 12.5in (32cm) - Age 9/10 yrs, 13in (33cm) - Age 11 yrs, 13.5in (34cm) - Age 12 yrs, 14in (36cm) - Age 13 yrs, 14.5in (37cm) - Age 14 yrs, 15in (38cm) - Age 15 yrs, 15.5in (39cm) - Age 16 years, 16in (41cm), 16.5in (42cm) & 17in (43cm).

From £12.50

QUANTITY/SIZE REQUIRED

DOWNHAM MARKET ACADEMY | UNIFORM



LONG SLEEVE SHIRTS - TWIN PACK



Chest pocket and short sleeves. Easy care and machine washable. Available in collar sizes in inches 11in (28cm) - Age 3/4 yrs, 11.5in (29cm) - Age 5/6 yrs, 12in (30cm) - Age 7/8 yrs, 12.5in (32cm) - Age 9/10 yrs, 13in (33cm) - Age 11 yrs, 13.5in (34cm) - Age 12 yrs, 14in (36cm) - Age 13 yrs, 14.5in (37cm) - Age 14 yrs, 15in (38cm) - Age 15 yrs, 15.5in (39cm) - Age 16 years, 16in (41cm), 16.5in (42cm) & 17in (43cm).

From £12.50

QUANTITY/SIZE REQUIRED



LUTON GREY STRAIGHT SKIRT



Grey Luton Skirt. Back vent. Two front pockets. Zip/button fastening. Waist sizes are in inches. Available in various lengths, please see drop down box for options.

From £15.00

QUANTITY/SIZE REQUIRED



GIRLS GREY SLIM LEG TROUSER



Slim leg girls trouser. Front pocket. Contrast internal binding. Internal waist adjuster. Waist sizes are in inches. Available in various lengths.

From £17.50

QUANTITY/SIZE REQUIRED



BOYS' GREY SLIM FIT TROUSER



Flat front in fashionable slim cut. Jetted back pocket. Zipped security pocket. Internal waist adjuster. Single hook & bar with button extension. Waist sizes are in inches. Available in various lengths.

From £16.99

QUANTITY/SIZE REQUIRED



BOYS' GREY FLAT FRONT BLACK TROUSERS



Inside waist adjuster. Two side pockets. Back pocket with button. Belt and belt loops. Security pocket with zip. Hook and bar fastening with button extension. Spare button. Maxtech stain resistant finish. Waist sizes are in inches. Available in various lengths.

From £17.00

QUANTITY/SIZE REQUIRED

DOWNHAM MARKET ACADEMY | PE UNIFORM



DOWNHAM MARKET ACADEMY BOYS PE POLO SHIRT

CHEST
30/32

CHEST
34/36

CHEST
38/40

CHEST
42/44

In House colours
BLACK/SKY
BLACK/PURPLE

BLACK/EMERALD
BLACK/SCARLET

Embroidered logo.

From **£12.50**

QUANTITY/SIZE/COLOUR
REQUIRED



DOWNHAM MARKET ACADEMY GIRLS PE POLO SHIRT

CHEST
30/32

CHEST
34/36

CHEST
38/40

CHEST
42/44

In House colours
BLACK/SKY
BLACK/PURPLE

BLACK/EMERALD
BLACK/SCARLET

Embroidered logo.

From **£12.50**

QUANTITY/SIZE/COLOUR
REQUIRED



DOWNHAM MARKET ACADEMY BLACK UNISEX SPORTS SHORTS

WAIST
24/26

WAIST
28/30

WAIST
32

WAIST
34

WAIST
36

WAIST
38

Reversible jersey material to match R150 sports top. Long length with speed vents.
Waist measurement are in inches. Can be worn by boys and girls.

From **£8.50**

QUANTITY/SIZE REQUIRED



DOWNHAM MARKET ACADEMY 1/4 ZIP PE TOP

CHEST
30/32

CHEST
34/36

CHEST
38/40

CHEST
42/44

In House colours
BLACK/SKY
BLACK/PURPLE

BLACK/EMERALD
BLACK/SCARLET

Embroidered logo. With contrast side panels and piping on side panels and collar tip. Available in sizes 30/32in, 34/36in, 38/40in and 42/44in. Can be worn by boys and girls.

From **£18.50**

QUANTITY/SIZE/COLOUR
REQUIRED



DOWNHAM MARKET ACADEMY RUGBY TOP

CHEST
30/32

CHEST
34/36

CHEST
38/40

CHEST
42/44

In House colours
BLACK/SKY
BLACK/PURPLE

BLACK/EMERALD
BLACK/SCARLET

Embroidered logo.
Twin stitched. Taped at small grandad collar and placket.

From **£19.99**

QUANTITY/SIZE/COLOUR
REQUIRED



DOWNHAM MARKET ACADEMY PE SOCKS

SIZE
1/5

SIZE
6/11

Black. Stretch nylon. Size: Large boys 1/5 & Mens 6/11 (shoe size)

From **£4.99**

QUANTITY/SIZE REQUIRED



DOWNHAM MARKET ACADEMY GIRLS SPORTS LEGGINGS

WAIST
24/26

WAIST
26/28

WAIST
28/30

WAIST
30/32

WAIST
32/34

WAIST
34/36

WAIST
36/38

Black. Girls sports leggings. Waist size in inches.

From **£12.00**

QUANTITY/SIZE REQUIRED

DOWNHAM MARKET ACADEMY | ADDITIONAL ITEMS



SCHOOL WATER BOTTLE

Clear 500ml plastic drinks bottle.

From **£2.75**

QUANTITY REQUIRED



MOUTHGUARDS

Tested in accordance with BSI DD-253-2001 and CE compliant. Boil and bite fitting. Available in junior and adult. N.B Colour may vary

From **£2.99**

QUANTITY/SIZE REQUIRED



NAME LABELS *(Optional)*

By using our printed iron-on labels, your child's uniform and sports kit can be identified easily and efficiently. These labels can be ironed on anywhere inside your child's garment. Maximum of 17 characters. Packs of 25 at £3.50 or 50 at £5.00.

From **£3.99**

QUANTITY/SIZE REQUIRED



OPAQUE TIGHTS *(Optional)*

70 denier. Twin Pack. Fine comfort flatlock seams. Integral waist band - not cheap turned tunnel elastic. Only Du Pont Lycra. Available in two sizes - teens and ladies.

From **£6.25**

QUANTITY/SIZE REQUIRED



SHARPIE FINE MARKER

Black fine Marker. Permanent on most hard to mark surfaces. Double fine fibre tip. Line width 1mm.

£2.50

QUANTITY REQUIRED



SCHOOLS

ORDER ONLINE

ORDER THE **DOWNHAM MARKET ACADEMY**
UNIFORM ONLINE AT
www.totalclothingshop.co.uk/dma

DOWNHAM MARKET ACADEMY CLOTHING SUPPLIED BY **TOTALCLOTHINGSHOP.CO.UK**

VISA Mastercard American Express

NEED HELP WITH AN ORDER? ☎ CALL 01733 374705



HOME PRODUCTS CONTACT US LOGIN BASKET

TOTAL CLOTHING SHOP .CO.UK

DOWNHAM MARKET ACADEMY

General Uniform
PE Uniform

Welcome To Downham Market Academy Web Shop



Please click on the left hand menu to start shopping

**EARLY
BIRD OFFER**
**FREE POSTAGE
& PACKING**

When you spend
over **£50.00**

(From 1st until
30th June 2020).

HINTS & TIPS

ORDER WITH A FRIEND!

Have you thought about ordering
with a friend to reach the
free carriage value?



SCHOOLS

SHOWROOM LOCATION

HINTS & TIPS

Please check our website www.totalclothing.co.uk before travelling to our showroom.

Opening times may alter and we may be taking appointments only to ensure social distancing. We will update the website.

If you do have any queries, please contact our Customers Services Team who would be happy to help



No 9 Botolph Trading Estate,
Oundle Road, Peterborough PE2 9QP
(Turn onto Botolph Bridge next to Hilton Van Hire)

01733 394758

customerservices@totalclothing.co.uk



SCHOOLS

Visit www.totalclothingshop.co.uk/dma
or visit our showroom.

WE DO LOTS MORE THAN SCHOOL UNIFORM...



Trip or leavers
hoodies - Sell your trip
hoodies online
- no hassle!



Creating professional,
affordable personalised
clothing. In house printing
and embroidery.



We can supply all of
your printed and
embroidered clothing
either in bulk or via
your own online
club shop.



Create online
personalised
clothing campaigns
to raise funds.

CREATING PROFESSIONAL, AFFORDABLE PERSONALISED CLOTHING

TOTAL
C L O T H I N G

No 9 Botolph Trading Estate, Oundle Road, Peterborough PE2 9QP
Call 01733 394758 sales@totalclothing.co.uk

www.totalclothing.co.uk