

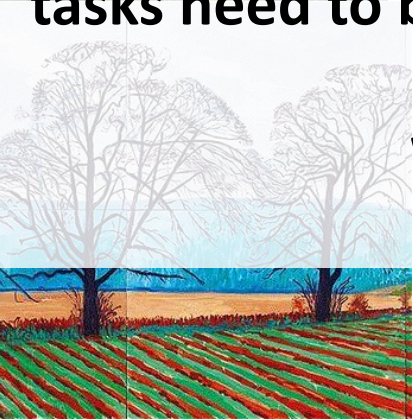


# Welcome to GCSE Art

We hope you were inspired by the GCSE and A Level Art Exhibition viewing and have taken lots of ideas for the summer prep task.

Please see details of the summer prep task on the following slides. These tasks need to be completed ready for your first GCSE Art lesson back after the summer holidays.

We look forward to seeing you in September.



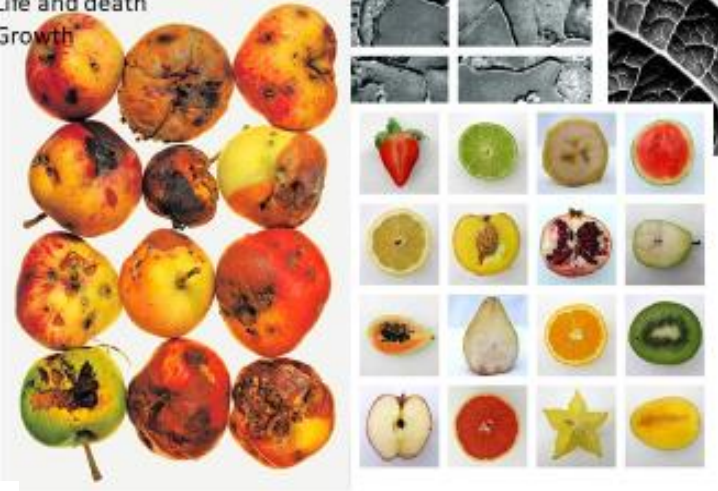
# Year 10 Art 'Prep' Task

**Set: 29.06.23**  
**Due in: Week beginning 04.09.23**  
 You summer 'prep' task is:

1. Take and send by e-mail a collection of your own photographs on the theme of **Organic/Natural Forms** (at least 10)
2. Complete a sustained, tonal drawing from one of your photographs.

Any problems with printing please e-mail your photographs to one of us (in a powerpoint or word document) from your school e-mail address BEFORE the due date: [kandrews@dma.tela.org.uk](mailto:kandrews@dma.tela.org.uk) or [nicholson@dma.tela.org.uk](mailto:nicholson@dma.tela.org.uk)

Organic forms  
 Nature  
 Fruit and Vegetables  
 Sustainability  
 Environment  
 Decay  
 Life and death  
 Growth



Consider the impact of

- Lighting: high contrast to enhance tonal variation?
- Colour or greyscale.
- Cropped/zoomed in compositions
- Repetition of an image with changes/no changes.
- What is in the background: does it distract or enhance the image?



Food photography



Combining natural forms with the human form



A bright white background to give a crisp, professional effect.

Consider the impact of:  
 \* Unusual pairings (for example the organic poppy seed heads set against a background of rusty metal) This works so well ↓



You DO NOT need an expensive camera, you can take amazing photographs on your phone or I pad.

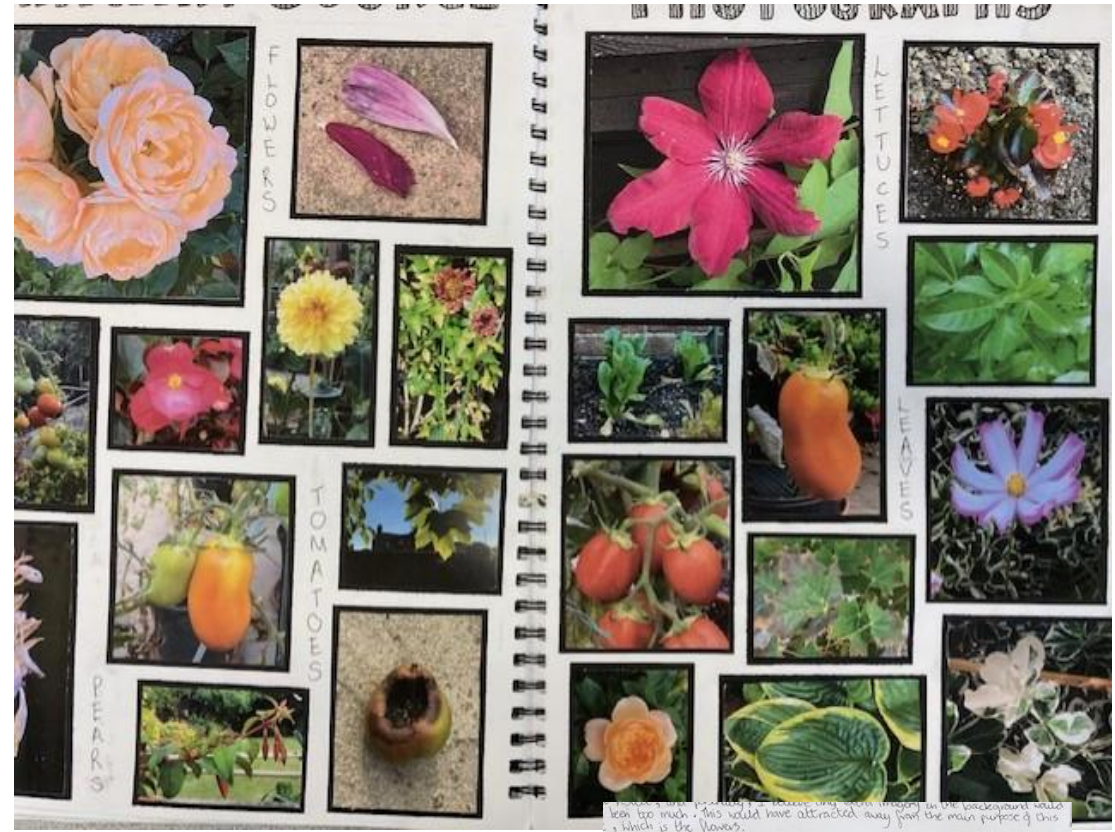


**Complete the sustained drawing in your homework sketchbook.**

# Student Examples

Organic/Natural Form photographs

Sustained drawing from a chosen photograph

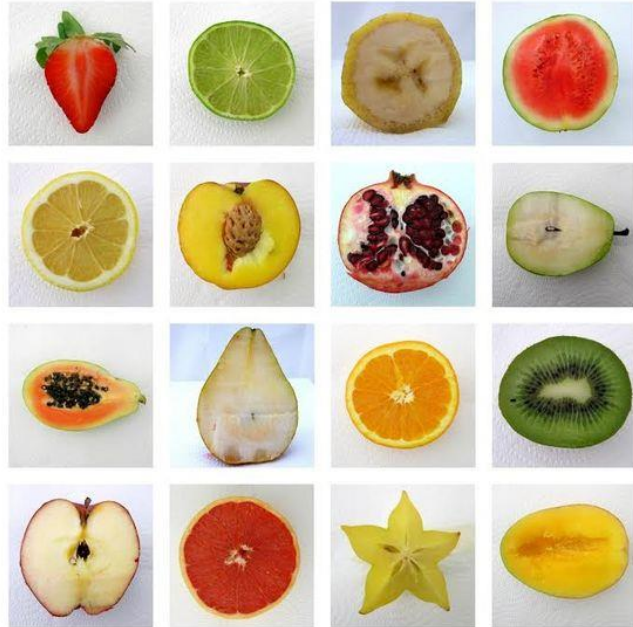
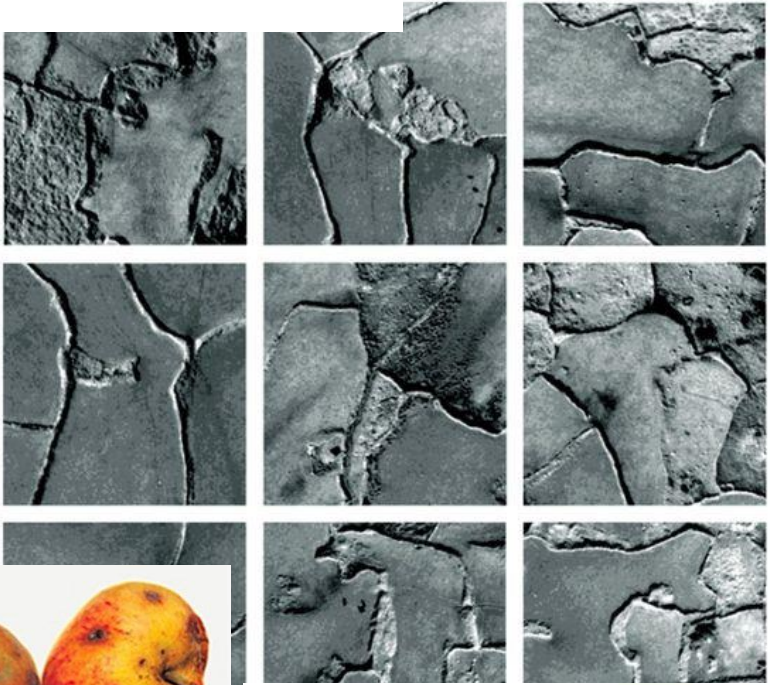


Please complete your sustained drawing in your A4 'Prep'/homework booklet. You can use pencil or biro.



# Inspiration

Organic forms  
Nature  
Fruit and  
Vegetables  
Sustainability  
Environment  
Decay  
Life and death  
Growth



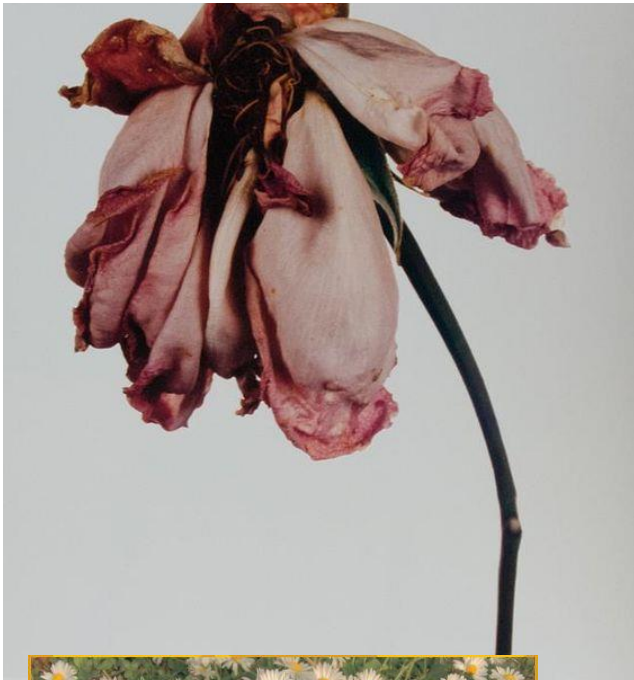
Consider the impact of

- Lighting: high contrast to enhance tonal variation?
- Colour or greyscale.
- Cropped/zoomed in compositions
- Repetition of an image with changes/no changes.
- What is in the background: does it distract or enhance the image?



Food photography

# Inspiration



Combining natural forms  
with the human form



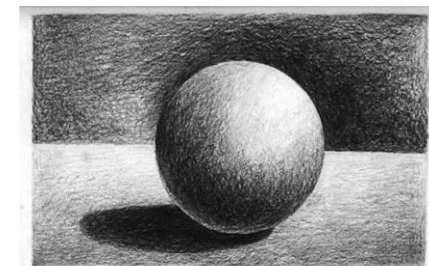
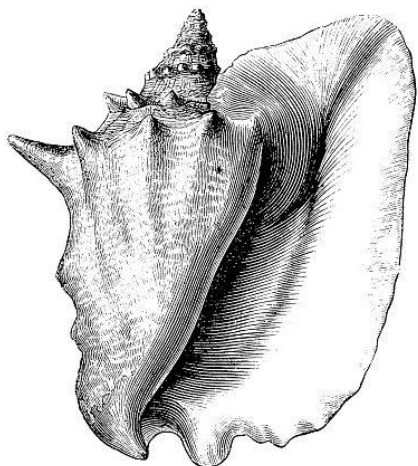
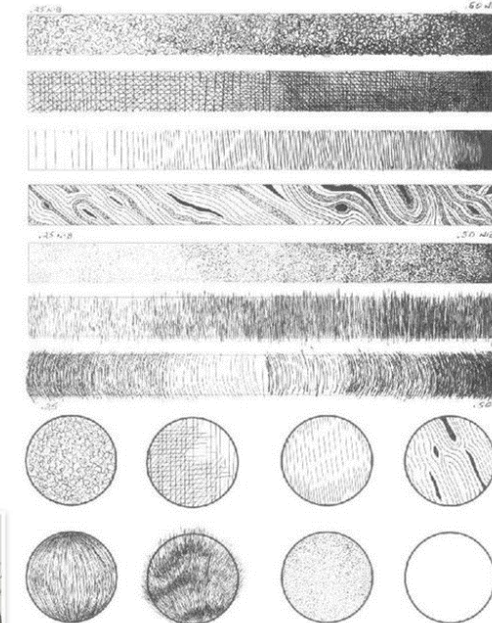
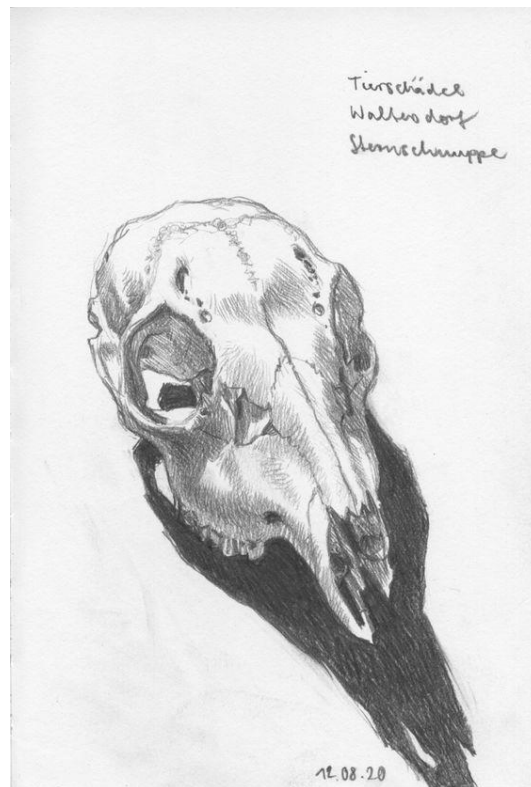
A bright white background to give a  
crisp, professional effect.

Consider the impact of:

\* Unusual pairings (for example  
the organic poppy seed heads set  
against a background of rusty  
metal)



# Inspiration



## Addressing common mistakes when applying tone:

- Build tone through mark-making; hatching, cross hatching, stippling etc rather than smudging. This indicates texture rather than a strange smoothness.
- Focus on the simple effect of varying the pressure of your pencil to create different tones within simple pencil lines. Avoid heavy outlines.
- Really focus on using direction of lines in your shading to give a sense of form.
- Squint your eyes and look for comparative tones.

Key words: Tonal variation, direction of line, depth, form, space organic, highlight, mark-making, composition, positive and negative space.