

DOWNHAM MARKET
ACADEMY



Newsletter

12th January 2026

Having come back to snow on Monday students engaged brilliantly in lessons and really "hit the ground running" with their learning. An excellent start!

This week we have our Year 9 pathways evening; we look forward to seeing as many year 9s and their parents as possible for this event.

Best wishes for the coming week,
Natalie



Upcoming events & Notices

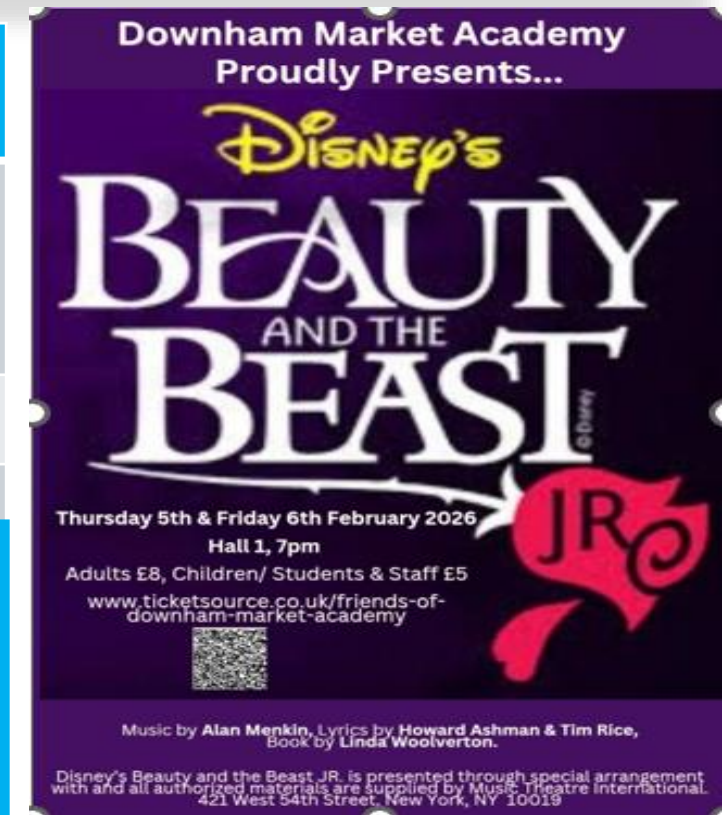
Athena
Sixth Form College



Monday	Tuesday	Wednesday	Thursday	Friday	PSHE focus
	Year 8 HPV vaccinations	Revision Cafe - Music A6 and English Literature - The Bridge	Year 9 – Options Evening 5pm – 6:30pm		What are 'benefits'? Who gets them and how do they?

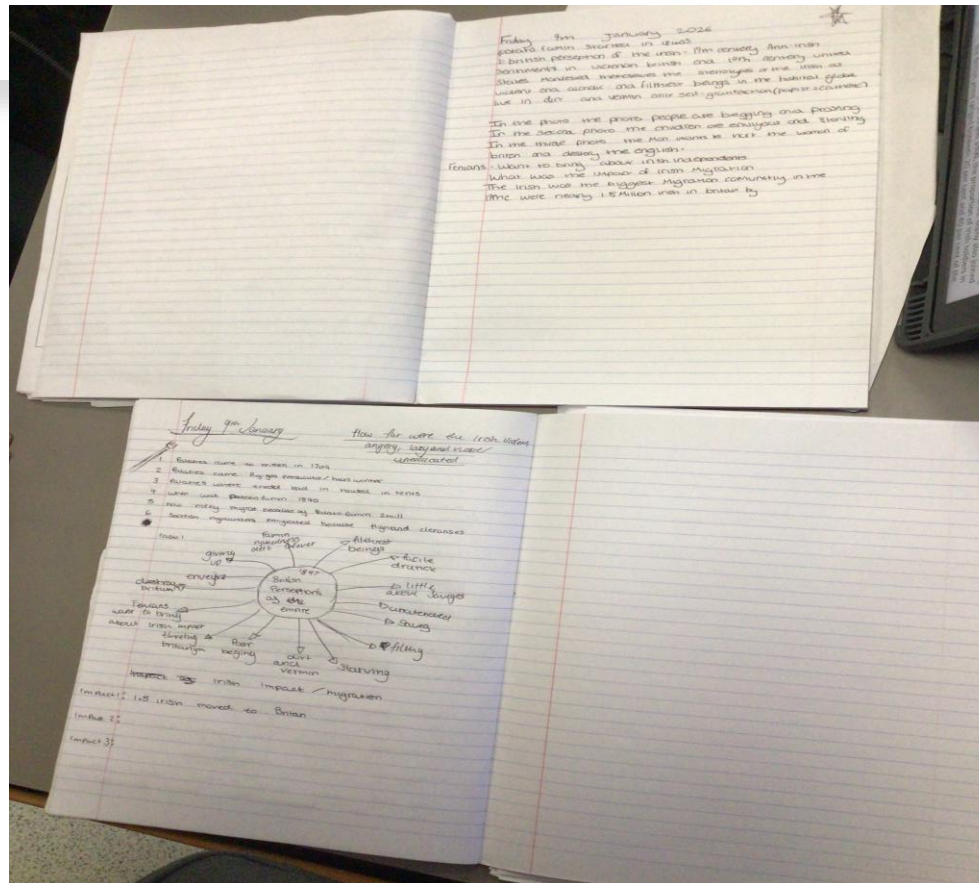
Notices

Don't forget DMA is a **nut free school**; please ensure packed lunches don't contain any items containing nuts.



Work of the Week

Athena
Sixth Form College



Year 9 Pathways Evening – Thursday 5-6:30



Auditions!

Athena
Sixth Form College



National Theatre

CONNECTIONS 2026

We're proud to announce that we have once again been selected as part of the National Theatre's Connections programme, which offers young people the chance to work with new writing, ambitious storytelling, and to experience the full creative process from first rehearsal to performance on a professional stage.

TO TAKE PART IN CONNECTIONS 2026, YOUNG PEOPLE WILL NEED TO BE:

- Aged 13 to 19 years old
- Available for February Half Term (14th - 21st Feb '26)
- Available for the 'home' performance on Saturday 21st February
- Available for weekend rehearsal (11th, 12th April '26) ahead of the performance at Connections Festival day on (18th April '26) at The Garage Theatre, Norwich

About Fishville: when Jared walks into the sea and never returns, the quiet town of Saltwell begins to fracture. Then a new girl arrives and strange messages start appearing, signed by Jared himself. As rumours of an underwater world ripple through the community and the tide pulls more people under its spell, two young women must uncover the truth before Saltwell is lost to a vengeful ocean ...

FISHVILLE
by Afsaneh Gray

AUDITIONS
SUNDAY 18TH JANUARY
10AM TILL 12PM

HOME PERFORMANCE
SATURDAY 21ST FEBRUARY
7.30PM

THE GARAGE PERFORMANCE
SUNDAY 18TH APRIL

Funded by UK Government

ARTS COUNCIL ENGLAND

janfeb

Making Sense of SEND

Athena
Sixth Form College



Please find information on the link below about an event on January 21st 2026 in Sheringham:

- **This is a free event** for parents and carers of children and young people with SEND (Special Educational Needs and Disabilities).
- It brings **over 20 SEND services together in one place**, all there to offer information, advice, and practical help.
- You can also hear a **talk from the School and Community Team** and speak directly with **SEND advisors and EHCP (Education, Health and Care Plan) support staff**.
- It's designed to help families **understand what support is available**, ask questions, give feedback and connect with relevant services.
- Children can attend **with their parent or carer**.
- **When & where:** Wednesday **21 January 2026, 1:30 – 3:30 pm** at **Sheringham Community Centre, Holway Road, Sheringham NR26**.
- Link to more information - [Reminder: Making Sense of SEND Information Fair - Sheringham on 21 January - Norfolk Schools and Learning Providers - Norfolk County Council](#)

Exams Update

Athena
Sixth Form College



As part of our ongoing commitment to ensuring that all examination access arrangements remain fully compliant with the latest Joint Council for Qualifications (JCQ) regulations, we are writing to update you on the way we will be supporting students who experience visual stress or benefit from colour differentiation during assessments. Please note that these changes will **not** affect students currently in Year 11.

JCQ guidance ([JCQ-AARA-2025_FINAL.pdf](#)) requires centres to ensure that any modifications to examination papers are *evidence-based, appropriate, and represent the least intrusive adjustment necessary* for the candidate. In line with this national guidance, we will be standardising our approach and will no longer routinely provide coloured paper as the primary method of support.

What this means in practice:

Use of overlays or tinted glasses (first-line support)

For students who experience visual stress or who find colour differentiation helpful, the JCQ recognises coloured overlays and tinted lenses as suitable aids. These will therefore form the first-line provision. Overlays can be provided by the school, and these supports are fully permitted in all examinations.

Cream paper for students who experience glare or difficulty with white paper

Where a student has a documented difficulty specifically related to white paper, cream paper and cream exercise books may be provided. This aligns with JCQ guidance on using minimal but effective visual adjustments.

Coloured paper (exceptional circumstances only)

The use of coloured exam papers will only be considered where there is clear, robust evidence demonstrating that overlays, tinted glasses, and neutral-coloured paper do not meet the student's needs. Such cases are expected to be rare and must comply fully with JCQ criteria.

Why the change is necessary

JCQ regulations require centres to use adjustments that are consistent, reliable, and clearly justified. Moving to this standardised model ensures that all students receive support that is both appropriate to their needs and fully compliant with JCQ expectations regarding paper modifications.

By prioritising overlays, tinted lenses, and neutral paper, we can ensure a stable and regulation-based approach that continues to support students effectively while maintaining the integrity of the examination process.

Jake Lawrence - Assistant Headteacher , SENDCo & Designated Teacher for Children in Care

Celebrating success

Athena
Sixth Form College



Year 7

Welcome back!

A snowy Monday definitely made our return memorable!

Mr Yare and I would like to wish you all a very happy New Year ahead.

Year 8

Happy New Year to you all and your families. Whilst, it was a rather chilly start back, you all stepped up to the plate and started the term off on the right foot!

This term we will be focusing on

RESPECTING OTHERS
"treating others as we wish to be treated"

Mr Arrowsmith & Mrs Lipscombe-Cooke

Year 9

Welcome back, Year 9, and Happy New Year! We hope you had a restful Christmas break and are ready for the term ahead.

As a year group, our New Year's resolution is to **be kind**—to ourselves, to each other, and to our school community. Let's make 2026 a positive and supportive year for everyone.

Don't forget – Options Evening on Thursday 15th 5:30pm

Year 10

Welcome back, Year 10!

It's been a busy first week back as we reset routines and expectations. This is a key year for building focus, resilience, and good habits. Let's make 2026 count.

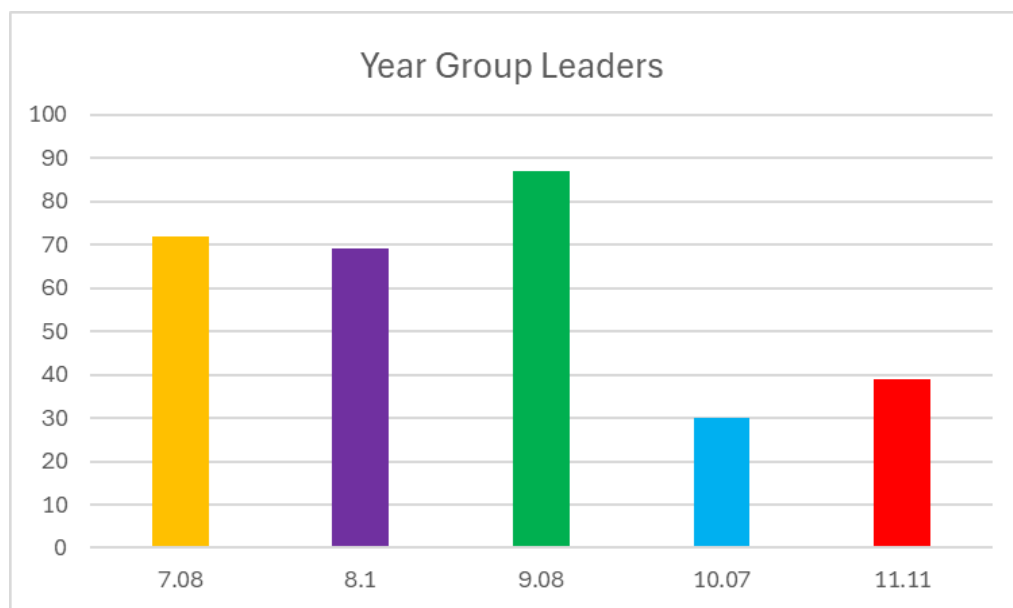
Year 11

Welcome back Year 11, the final year of your time at DMA. There will be Mock exams after half term, more information to follow this week. Revision Café are running this week, with Music and English Literature, please make the most of these. Also The Bridge will now be open Tuesday and Thursdays for independent revision from 3.05-4.00pm.

Please make the most of the opportunities.

Finally, at the end of January there will be a parent exam information evening, more information to follow

Achievement



Well done to our current year group leads! Mr Saul's 9.08 taking the top overall spot for the school this week. A new term means a new PD group competition, meaning points again mean prizes!

Keep working to achievement points and well done on such a positive start to the term!

Extracurricular Clubs



Clubs at DMA

- As always, there are a whole range of clubs on offer at DMA from sports clubs including **football** and **netball**, to **coding** and **fashion**! Take a look at the [DMA Website](#) to find out more.
- **Sign up** for any club, please use the EduLink Clubs section (you may need to press the "More" button on the home page first).



Late Bus

- Parents/Carers can sign up on EduLink in the Clubs section to the Watlington or the Outwell late bus.
- Late buses run Monday-Thursday and leaves DMA at 16:15. The routes are as follows:
- **Outwell/Upwell:** Salters Lode Bus Stop, Nordelph Car Wash Bus Stop, Crown Lodge, Ali Kebabs Bus Stop, The Crown Pub, Orchard Gardens, Baptist Rd Bus Stop, Postbox Bus Stop, A1101 Nr Silt Road, PE14 9JQ, Welney
- **Watlington:** Stow Bridge, Magdalen, Runcton Holme (by request), Fen Rd/Downham Road, Rectory Lane, Britton Close, Wormegay, Shouldham, Fincham

Sixth Form News

Athena
Sixth Form College



UCAS

Congratulations to all students who last week submitted their official University applications via UCAS. We are incredibly proud to see a range of offers already given to our students – a testament to the hard work of students and staff alike – congratulations!



To make it easier for students to access the work they have been set by teachers for Hub lessons, independent study in school and home study sessions, all work will be set on Edulink. With all the work to be found in one place, students should be able to organise their work more efficiently and parents can also see what has been set.

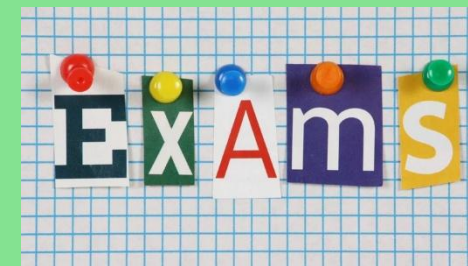
On the **19th January** year 12 and Year 13 students have a workshop to support with exam anxiety. Please encourage students to come into college for this session if they would normally be on home study at the allocated time.

9:00 – 10:00am: Year 12 Male students

10:00 – 11:00am: Year 12 Female students

11:10am – 12:10pm: Year 13 Male students

12:10 – 1:10pm: Year 13 Female students





**Miss McClean is calling all
year 11 families to join the
readalong...**

Athena
Sixth Form College



Tuesday 13th January 5-5:30

Join at 5pm for a prompt 5:05pm start.

Miss McClean will be reading Romeo and Juliet.

The call will end with a thinking question for you to discuss together at home.

Microsoft Teams meeting

Join: <https://teams.microsoft.com/meet/39386942906903?p=rz7B59dXSTqIsy7Tod>

Meeting ID: 393 869 429 069 03

Passcode: Qt92uG6U

